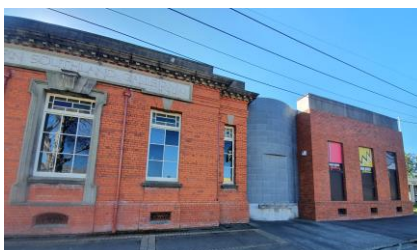


GORE DISTRICT COUNCIL
HISTORIC HERITAGE ITEM RECORD FORM

HERITAGE ITEM NAME former Carnegie-Coronation Library / Eastern Southland Gallery

ADDRESS 14 Hokonui Drive, Gore

PHOTOGRAPH



(GDC, October 2021)

DISTRICT PLAN ITEM NO. H9 **HNZ LIST NO. & CATEGORY** n / a
(at time of assessment)

LEGAL DESCRIPTION Section 1 Block IX Town of Gore

GDC FILE NUMBER 3257637

DATE OF CONSTRUCTION 1909-10

**ARCHITECT/DESIGNER/
BUILDER** ER Wilson, architect; Adam Speden, contractor

STYLE Edwardian Baroque

PHYSICAL DESCRIPTION

Single-storey building with squat L-shaped footprint, hipped roof and apsidal end to east. Curved entrance porch at north end has a flat roof concealed by solid parapet. Panelled entrance doors with arched fanlight and console as keystone are framed by Corinthian columns and an open bed pediment. Panel above door bears date '1909'. Multi-pane windows with fanlights inset with coloured glass; name panel on west elevation is centred on window with decorative surround and oversize keystone. Ornamental vent grilles along base; brickwork laid to give rusticated effect. Curved, east-facing elevation has panel above windows bearing words 'Coronation Library'.

MATERIALS/STRUCTURE

Brick, cement plaster, metal. roofing

ADDITIONS/ALTERATIONS

Parapet removed (1961). Panel on west wall altered to read 'Eastern Southland gallery' (1984?). John Money Wing erected to south (2003).

SETTING

The historic portion of the Eastern Southland Gallery stands on the east side of Hokonui Drive, overlooking its intersection with Irwell and Norfolk Streets. The gallery is part of the

civic precinct, which also includes the Police Station, Courthouse and Public Library, at the north end of the town centre. The scheduled setting is limited to the land parcel on which the historic building is located; it does not include the modern extension to the building.

HISTORY

Gore was in possession of a library by 1884 and in 1903 the town's Athenaeum was renamed the Gore Coronation Library in honour of the coronation of King Edward VII in August 1902. A new building, funded by American philanthropist Andrew Carnegie, was erected in Norfolk Street in 1909-10. The grant of £2000 from Carnegie had been announced in the local newspaper in August 1907; it was conditional on a site being given, £150 per annum being rated for maintenance, and the library reading room and home borrowing service being free in order to foster public education. The building was opened by Mayor Dugald Poppelwell on 31 August 1910. A new library on the neighbouring site opened in 1983; in the following year the Carnegie building reopened as the Eastern Southland Gallery.

HISTORIC AND SOCIAL SIGNIFICANCE

The former Carnegie-Coronation Library has high historic and social significance for its association with the development of Gore's community infrastructure and the global efforts made by Scottish-born, American steel magnate Andrew Carnegie to promote libraries for the betterment of working people. The library was one of 18 built in New Zealand with Carnegie funding, of which 12 are still extant.

CULTURAL AND SPIRITUAL SIGNIFICANCE

The former Carnegie-Coronation Library has cultural value as a demonstration of international philanthropy in the early 20th century and as a valued historic building that has been part of the cultural life of Gore for over 110 years.

ARCHITECTURAL AND AESTHETIC SIGNIFICANCE

The former Carnegie-Coronation Library has architectural significance for its Edwardian Baroque design by noted Invercargill architect Edmund Wilson. Wilson (1871-1941), who had earlier been in partnership with JE Mackenzie, also designed the Reid & Gray building in Mersey Street (1908) and Mataura Presbyterian Church (1932-33). He is best known for the Civic Theatre in Invercargill (1906), one of New Zealand's most outstanding Edwardian Baroque style buildings. Born and trained in Invercargill, Wilson also undertook a large number of church commissions in Southland and beyond. He was an active member of the Anglican church and a leader in the architectural profession.

TECHNOLOGICAL AND CRAFTSMANSHIP SIGNIFICANCE

The former Carnegie-Coronation Library has technological and craftsmanship significance for the quality of its Edwardian brick construction and detailing. Adam Speden (1878-1963) was a local builder and contractor who also operated a furniture and woodware factory in Gore. Speden built St Andrew's Presbyterian Church Hall & Sunday School in 1927-28.

CONTEXTUAL SIGNIFICANCE

The former Carnegie-Coronation Library has contextual significance as a local landmark and as one of a significant cohort of Carnegie Libraries built in New Zealand, the most in any country outside the USA.

ARCHAEOLOGICAL AND SCIENTIFIC SIGNIFICANCE

Although the building post-dates 1900, its site has potential archaeological values relating to its earlier use and development. SO 2758, dated November 1892, shows that the site was designated as the 'Athenaeum site' within the block recorded as a 'Reserve for Government

Buildings'. In 1906 the block contained, from north to south, the Athenaeum, a stock department cottage, the Fire Brigade Station, the Courthouse, and Police Station.

SUMMARY OF HERITAGE SIGNIFICANCE

The former Carnegie-Coronation Library / Eastern Southland Gallery has high overall heritage significance to Gore and to the district of Gore as a whole. The building has high historic and social significance for its association with Andrew Carnegie and the development of the district's cultural infrastructure and cultural value as an esteemed historic building. The former Carnegie-Coronation Library has architectural significance as an Edwardian Baroque design by noted Invercargill architect Edmund Wilson and technological and craftsmanship significance for the quality of its brick construction and detailing by local contractor Adam Speden. The former Carnegie-Coronation Library has contextual significance as a local landmark and as one of an important cohort of Carnegie Libraries built around the world; the building's site has potential archaeological significance relating to its pre-1900 use and development.

REFERENCES

- *Mataura Ensign* 21 August 1907, p. 2; 7 December 1909, p. 4.
- *Poverty Bay Herald* 21 August 1907, p. 5.
- *Southland Times* 2 September 1910, p. 5.
- Abigail van Slyck 'Six Lost, Twelve Remain', *New Zealand Historic Places*, No 60, September 1996, pp. 22-23.
- <https://www.heritage.org.nz/the-list/details/1702>
- <https://nzhistory.govt.nz/media/photo/carnegie-free-libraries>
- <https://nzhistory.govt.nz/media/interactive/carnegie-libraries>

REPORT COMPLETED	7 December 2021
AUTHOR	Dr Ann McEwan / Heritage Consultancy Services
REPORT UPDATED	XX
AUTHOR	XX
PEER REVIEWED	XX
REVIEWER	XX



Extent of scheduling, former Carnegie-Coronation Library, 14 Hokonui Drive, Gore.



The library under construction, 1910. Gore Historical Museum.